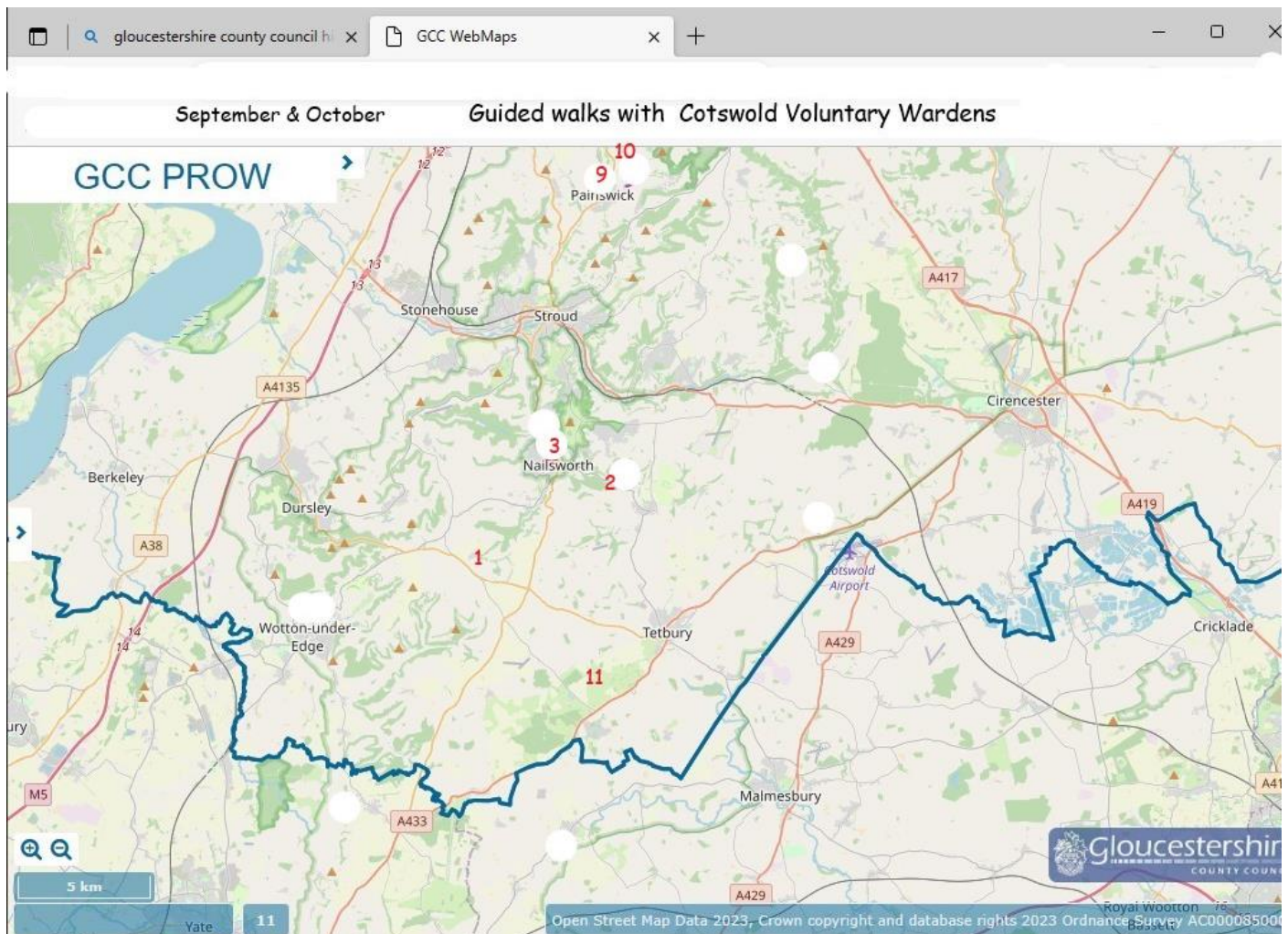


## Guided walks with Cotswold Wardens near Stroud, Tetbury, & Malmesbury in September & October, 2023



There are a number of warden-led walks coming up within easy reach of these towns. There is no need to book and there is no charge for joining the walks, 'though there is a box for a voluntary contribution towards materials for our work on footpath maintenance. Walks start usually at 10.00 am. & will return to the starting point. A packed lunch is advisable. Additional details are on the Cotswold National Landscape (formerly AONB) website.

### 9. Tuesday, 19th September, 2023 - Start: 10:00 am

Wotton Under Edge

Difficulty: **moderate** Duration: **3 hours** Distance **6 miles**

Start point: **the Chipping car park, Wotton Under Edge , GL12 7AD**

This enchanting walk starts from one of the Cotswold's most charming and thriving small towns. It takes us through farmland, woodland tracks and rolling parkland. Packed lunch needed, or lunch available locally after walk if needed.

### 10. Wednesday, 20th September, 2023 - Start: 10:00 am

Prinknash and Painswick

Difficulty: **Moderate** Duration: **2.5 hours** Distance: **4.5 miles**

Start point: Prinknash Abbey car park, signposted off the A46, GL4 8EX

This is a walk over the hills around Prinknash Abbey with glorious views over the Severn Vale. It takes in Buckholt Wood and Pope's Wood as well as Painswick Beacon. There is a café serving lunches at Prinknash adjacent to the car park.

11. Tuesday, 26th September, 2023 - Start: 1:30 pm

Leighterton's Anzacs And The Arboretum

Difficulty: **easy** Duration: **3.5 hours** Distance: **6 miles**

Start point: **13.30 on "the Street" by the church of St. Andrew, Leighterton, GL8 8UW.**

**Please park considerately in the village.**

Leaving historic Leighterton we head for the hamlet of Saddleworth. Quiet lanes and footpaths lead us to the Macmillan Way through Westonbirt Arboretum for a stretch of glorious early Autumn colour. On our return we will stop at Leighterton Church cemetery to see the Anzac memorial and graves.

1. Saturday, 7th October, 2023 - Start: 10:00 am. Dursley Walking Festival

Difficulty: **moderate** Duration: **4.5 hours** Distance: **8.5 miles**

Start point: "Hunters' Hall Inn", Kingscote, near Tetbury, GL8 8XZ

Discover the delights of Bagpath and Beyond. Explore the gems of Bagpath, Lasborough and Ozleworth in this journey through scenic valleys and historical buildings. It may be muddy in places, depending on weather. Packed lunch needed.

---

2. Thursday, 12th October, 2023 - Start: 10:00 am. Bee Boles And Other Things

Difficulty: **moderate** Duration: **3 hours** Distance: **6 miles**

Start point: "Queen Matilda" Pub., Avening, near Tetbury GL8NT.

Please park considerately in the village.

This is a relatively level walk with one short steep descent passing through the villages of Cherington and Nag's Head.

---

3. Tuesday, 17th October, 2023 - Start: 10:00 am

Oakridge Lynch to Bisley by Water Lane and return via Money Tump.

Difficulty: **Moderate** Duration: **3.5 hours** Distance: **7 miles**

Start point: park on the road near to "The Butchers Arms" at Oakridge Lynch, GL7 3NQ.

The quiet village of Oakridge Lynch is our start for this circular walk taking us along Waterlane to the Giant's Stone at Battlescombe, then on to Bisley with its legend come hoax of the Bisley Boy. From there we return across the fields passing Money Tump, through Bournes Green to Oakridge.

4. Wednesday, 25th October, 2023 - Start: 10:00 am. A Nailsworth ramble

Difficulty: **moderate** Duration: **2.5 hours** Distance: **3.5 miles**

Start point: "King George V" playing field (KGV) GL6 OHT car park.

This is off Park road & Wood lane, Nailsworth.

This is a relatively short stroll around the small town of Nailsworth including the peripheral hamlets of Watledge, Windsoredge and Shortwood. We take in the local football club at Forest Green and a nature reserve with superb views over Shortwood and beyond.

Tuesday, 31st October, 2023 - Start: 10:00 am

Slad valley - walking with Rosie

Difficulty: **Strenuous** Duration: **2 hours** Distance: **4 miles**

Start point: **Bulls Cross layby, on the B4070, north of Slad Village**

We will follow a large section of the Laurie Lee Wildlife Way, incorporating some lovely views over the Slad valley, as unspoilt today as it was 100 years ago.